

Chinese Tallowtree Invasion Potential

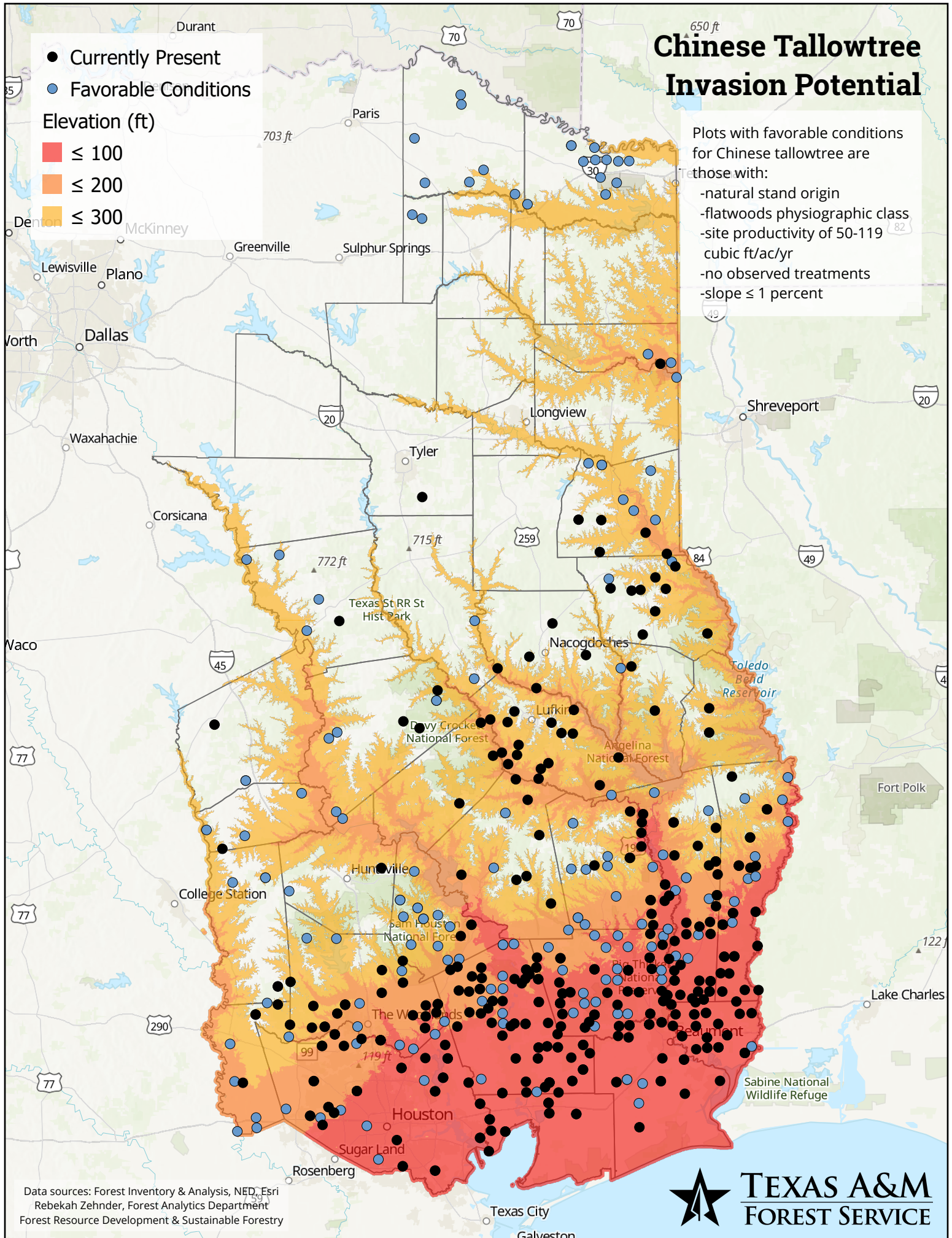
- Currently Present
- Favorable Conditions

Elevation (ft)

- ≤ 100
- ≤ 200
- ≤ 300

Plots with favorable conditions for Chinese tallowtree are those with:

- natural stand origin
- flatwoods physiographic class
- site productivity of 50-119 cubic ft/ac/yr
- no observed treatments
- slope ≤ 1 percent



Data sources: Forest Inventory & Analysis, NED, Esri
 Rebekah Zehnder, Forest Analytics Department
 Forest Resource Development & Sustainable Forestry

